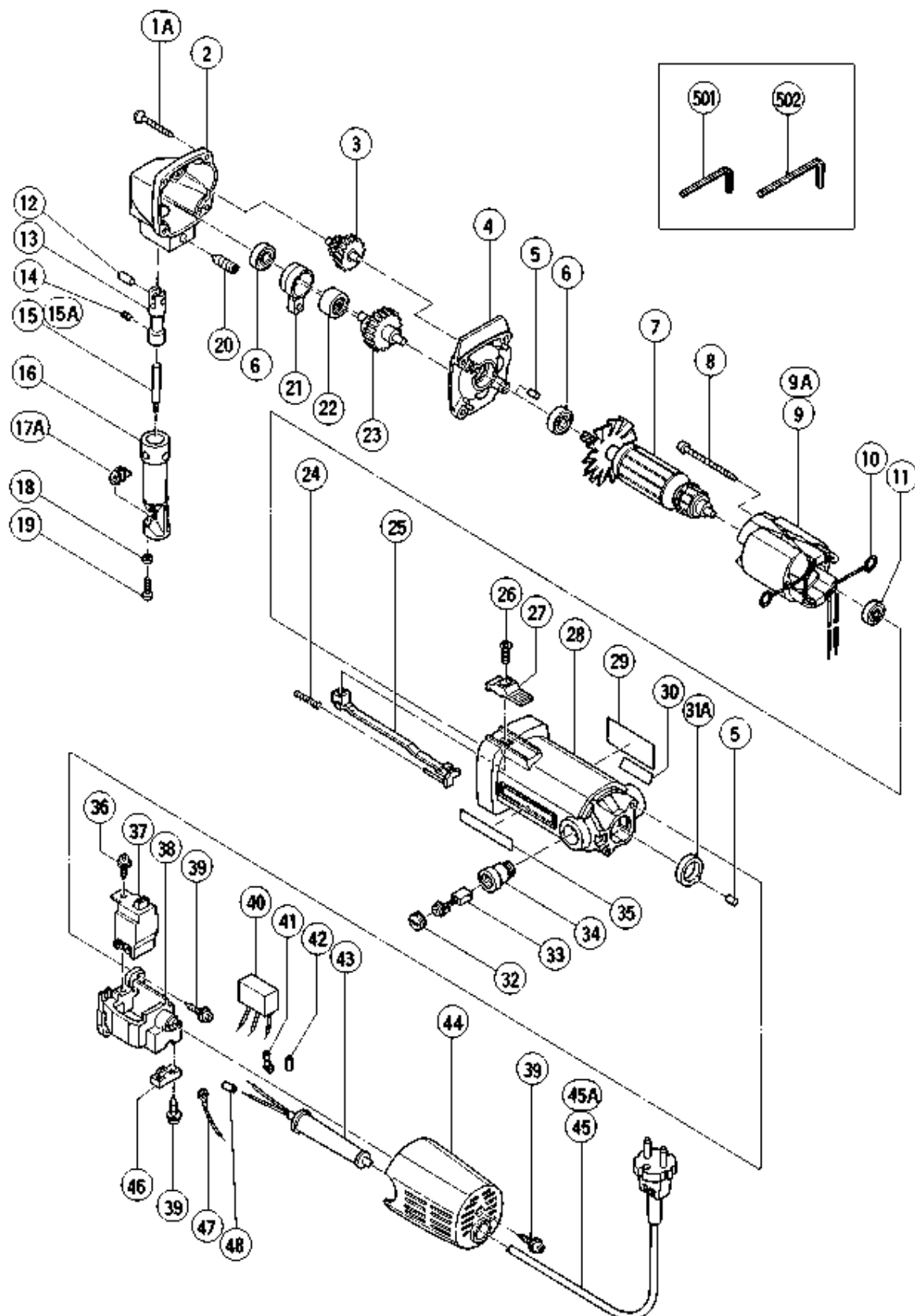


ELECTRIC TOOL PARTS LIST

■ NIBBLER**Model CN 16**

1998 · 4 · 30

(E4)



PARTS

CN16

ITEM No.	CODE No.	DESCRIPTION	No. USED	REMARKS	
1A	957-580	TAPPING SCREW D5X30	4		
2	998-033	GEAR COVER	1		
3	998-036	SECOND PINION	1		
4	998-032	INNER COVER	1		
5	931-701	BEARING LOCK	2	TILL 1997.6 COMMUTATOR SIDE	
5	931-701	BEARING LOCK	1	SINCE 1997.7	
6	608-VVM	BALL BEARING 608VVC2PS2L	2		
*	7	360-098E	ARMATURE 220V-230V	1	
	8	954-642	TAPPING SCREW D4X60	2	
*	9	340-127L	STATOR ASS'Y 220V-230V	1	INCLUD.10 FOR FIN,NZL,ITA,FRA,HOL,DEN,
*					SWE,AUT,FRG,ESP,POR,SUI,NOR,GBR,KOR
	10	930-630	BRUSH TERMINAL	2	
	11	626-VVM	BALL BEARING 626VVC2PS2L	1	
	12	993-546	PIN D6	1	
	13	998-034	PISTON	1	
	14	998-037	HEX. SOCKET SET SCREW M5X6	1	
*	15	998-030	PUNCH	1	
	16	998-038	DIE HOLDER	1	
	17A	998-039	DIE ASS'Y	1	INCLUD.18,19
	18	949-451	SPRING WASHER M3 (10 PCS.)	2	
	19	949-206	MACHINE SCREW M3X14 (10 PCS.)	2	
	20	998-008	HEX. SOCKET SET SCREW M8X20	1	
	21	998-004	CONNECTING ROD ASS'Y	1	INCLUD.22
	22	993-163	NEEDLE BEARING (M152112)	1	
	23	998-035	SPINDLE	1	
	24	938-299	SPRING	1	
	25	982-033	SLIDE BAR	1	
	26	949-323	FLAT HD. SCREW M4X12 (10 PCS.)	1	
	27	938-312	SLIDE KNOB (B)	1	
	28	982-020	HOUSING ASS'Y	1	INCLUD.34
	29		NAME PLATE	1	
	31A	982-023	BEARING BUSHING	1	
	32	937-847	BRUSH CAP	2	
	33	999-021	CARBON BRUSH (1 PAIR)	2	
	34	937-846	BRUSH HOLDER	2	
	35	957-561	HITACHI LABEL	1	
	36	982-034	TAPPING SCREW (W/WASHER) D4X12	1	
	37	980-778	SLIDE SWITCH (2P PILLAR TYPE)	1	
*	38	982-044	SWITCH HOLDER	1	
	39	984-750	TAPPING SCREW (W/FLANGE) D4X16	5	
*	40	994-273	NOISE SUPPRESSOR	1	

*:ALTERNATIVE PARTS

PARTS

CN16

ITEM No.	CODE No.	DESCRIPTION	No. USED	REMARKS
* 41	980-063	TERMINAL	1	
* 42	981-373	TUBE (D)	2	FOR NOISE SUPPRESSOR
* 43	953-327	CORD ARMOR D8.8	1	
44	982-035	TAIL COVER	1	
* 45A	500-436Z	CORD	1	(CORD ARMOR D8.8) FOR GBR (240V)
46	960-266	CORD CLIP	1	
* 47	982-303	INTERNAL WIRE	1	
* 48	981-373	TUBE (D)	2	FOR CORD

STANDARD ACCESSORIES

ITEM No.	CODE No.	DESCRIPTION	No. USED	REMARKS
501	990-666	HEX. BAR WRENCH 2.5MM	1	
502	944-458	HEX. BAR WRENCH 4MM	1	